

1

COVID-19 IS NOT OVER AND AGE IS NOT ENOUGH: USING FRAILITY FOR PROGNOSTICATION IN HOSPITALIZED PATIENTS

JOURNAL OF THE AMERICAN GERIATRICS SOCIETY

CO-FRAIL STUDY

FRAILITY
PLEASE HANDLE WITH CARE

CFS 1-3
Very fit to managing well

CFS 4
Vulnerable

CFS 5
Mildly frail

CFS 6
Moderately frail

CFS 7-9
Severely frail to terminally ill

Survival Probability

Time post admittance (days)

Time post admittance (days)	CFS 1-3	CFS 4	CFS 5	CFS 6	CFS 7-9
0	1.00	1.00	1.00	1.00	1.00
30	0.85	0.75	0.65	0.55	0.45
60	0.80	0.70	0.60	0.50	0.40
90	0.78	0.68	0.58	0.48	0.38
120	0.76	0.66	0.56	0.46	0.36
150	0.75	0.65	0.55	0.45	0.35
180	0.74	0.64	0.54	0.44	0.34

2

Understanding frailty as a marker for COVID survival

Last Week

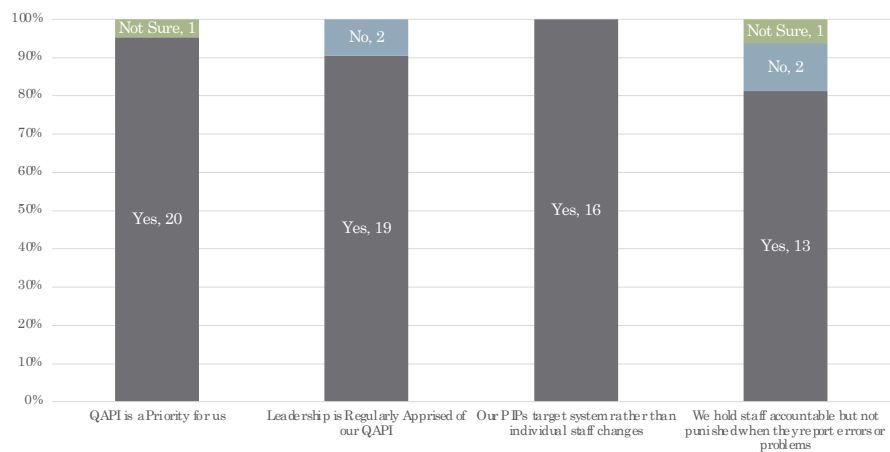
- How has measuring your baseline for social isolation been going?
- Option for benchmarking – Casper or Care Compare
- Or if still working on your Root Cause Analysis, how has that been going?

3

Step 3: Take your QAPI "Pulse" with a Self-Assessment

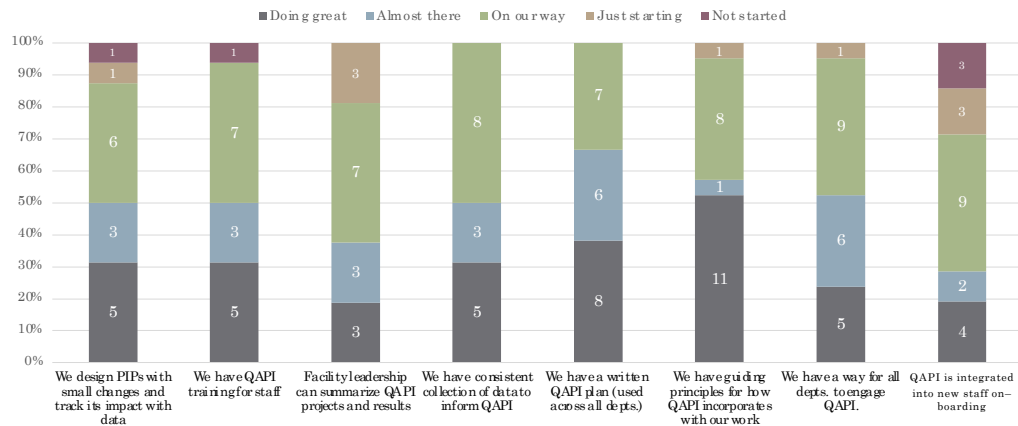
4

Results of our QAPI Self Assessment



5

Results of Our QAPI Self Assessment



6

Step 4: Identify your Organization's Guiding Principles

7

Purpose, Guiding Principles, and Scope for QAPI

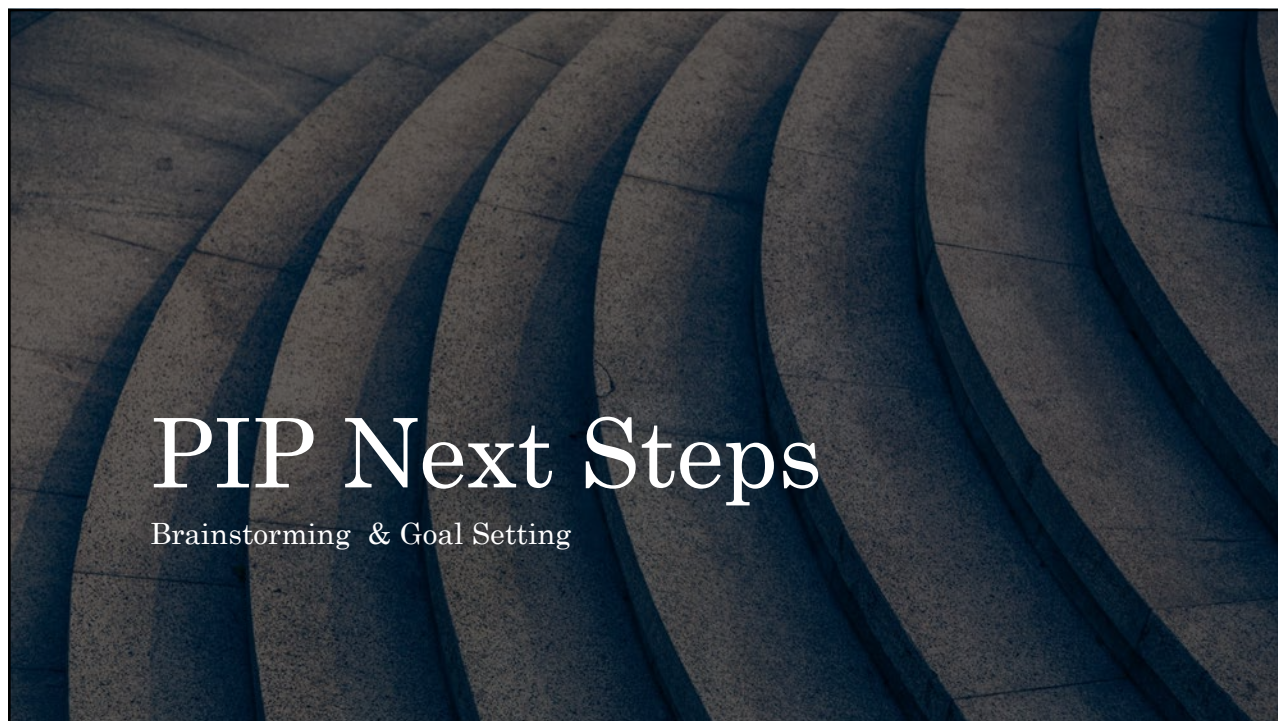


Mission, Vision, Values

ABOUT	OUR MISSION
ACCREDITATION	To extend Christian Hospitality through a continuum of care to those in need or at risk, regardless of race or religious belief.
MISSION, VISION, VALUES	OUR VISION
FUND DEVELOPMENT	To grow in strength, excellence and creativity in caring for others.

<https://gss.org/about/mission-vision-values/>



8



PIP Next Steps

Brainstorming & Goal Setting

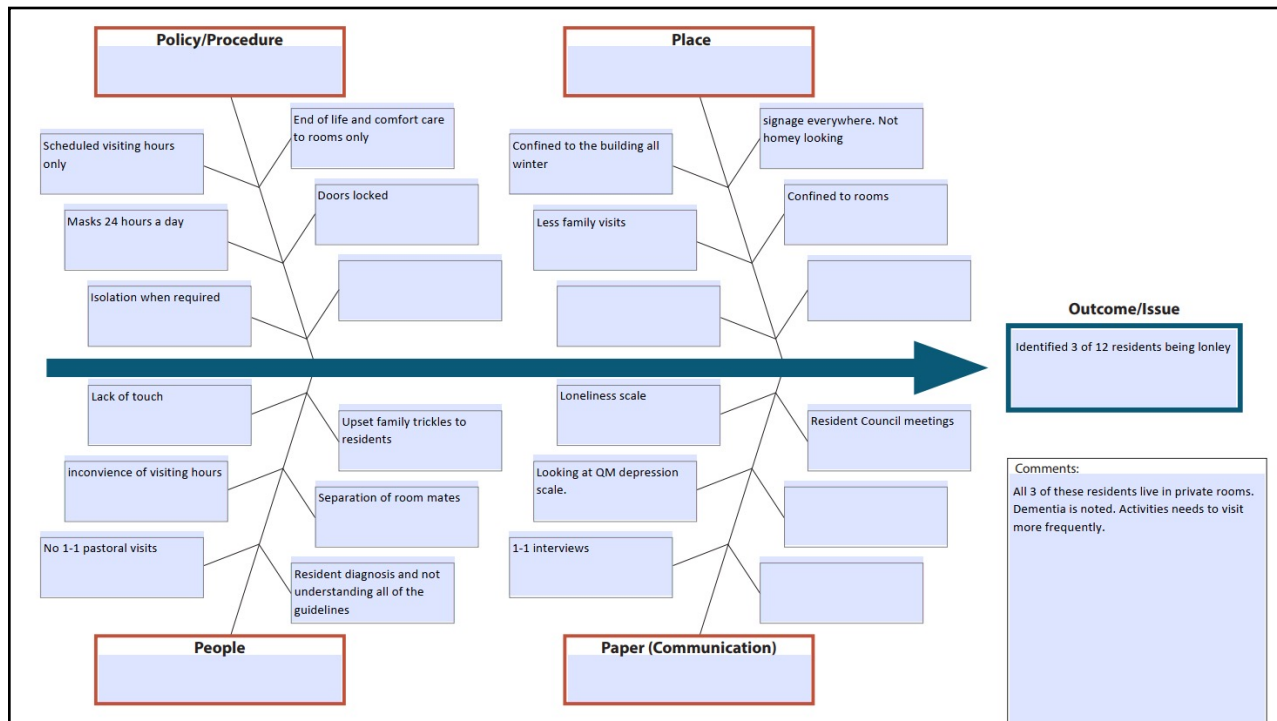
9

Performance Improvement Project (PIP) Guide

Start Date	Review Date(s)	Complete Date	PIP Squad Members
4/7/2021	Click or tap to enter a date.	6/30/2021	1. Linda, SW 2. Elaine, Activities 3. Marcy, Act 4. Cindy, Act 5. Arlene, Act 6. Kelly, Admin 7. Click or tap here to enter text.
Project Leader Cindy & Melissa	Click or tap to enter a date.	Click or tap to enter a date.	
Key Area for Improvement	Social isolation and loneliness		
Goal: Specific Measurable Action-Oriented Realistic Time Bound	To improve our resident's experiences of social isolation and loneliness by 50% through facility-wide and individualized interventions by June 30, 2021.		
What is the Root Cause(s) for the problem? Ask 'Why is this happening?' 5 times. If you removed the root cause, would this event have been prevented?			
Confined to building all <u>winter</u> Less (or no) visitation			
Barriers: See fishbone diagram			

10



11

Brainstorm:
 Educate staff, especially direct care staff to converse with residents & endorse the fact that we appreciate them and are here for them. Make them feel loved, needed and not alone.
 Get resident outside in courtyard when weather cooperates. Sunshine & fresh air refreshes the soul.
 Form team to order nice outdoor furniture.
 Design areas to attract activity – gardens, flowers, pots, etc. Inviting seating
 CASPER Report will be followed monthly looking at depression and watch for increase/decrease in percentage.

Plan	Do			Study and Act	
List the tasks to be done	Responsible Team Member	Start Date	Actual Completion Date	Comments/Lessons Learned	Adopt/Adapt/Abandon
Identify first small group to evaluate & do questionnaires	Linda	04/07/2021	04/11/2021	Click or tap here to enter text.	Click or tap here to enter text.
Click or tap here to enter text.	Click or tap here to enter text.	Click or tap here to enter text.	Click or tap here to enter text.	Click or tap here to enter text.	Click or tap here to enter text.
Click or tap here to enter text.	Click or tap here to enter text.	Click or tap here to enter text.	Click or tap here to enter text.	Click or tap here to enter text.	Click or tap here to enter text.

Study and Act					
Benchmarks/metrics [how will we measure progress?]	Baseline Date	First Measurement Date	Second Measurement Date	Final Measurement Date	Comments
UCLA Loneliness Scale	3/12	Click or tap here to enter text.	Click or tap here to enter text.	Click or tap here to enter text.	Click or tap here to enter text.
	04/11/2021	Click or tap here to enter text.	Click or tap here to enter text.	Click or tap here to enter text.	

12

Homework

Would like to see more of you submitting
(and receiving \$50/week)

This week we re-introduced the QIN PIP tool

- Fill in the sections related to RCA, Baseline...
- And this week's section on Goal Setting and Brainstorming

Submit Homework via Dropbox

- Or you may get a phone call reminder on Tuesday